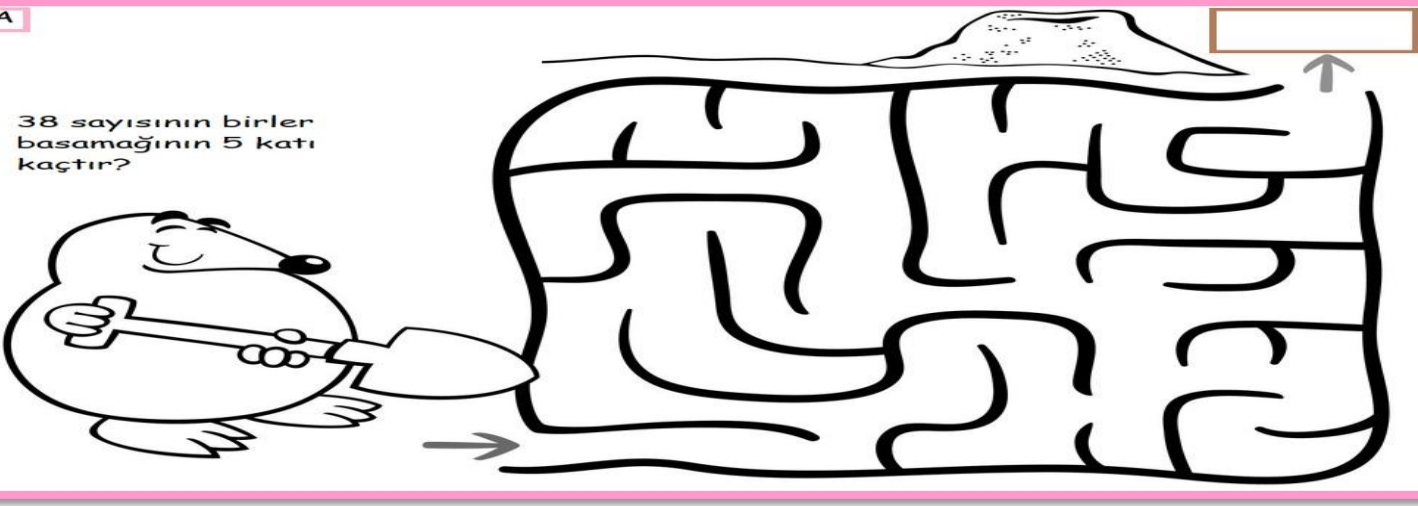


ADI SOYADI:

Soruların cevabını labirentlerdeki doğru yolu bulup yazalım.

**A**

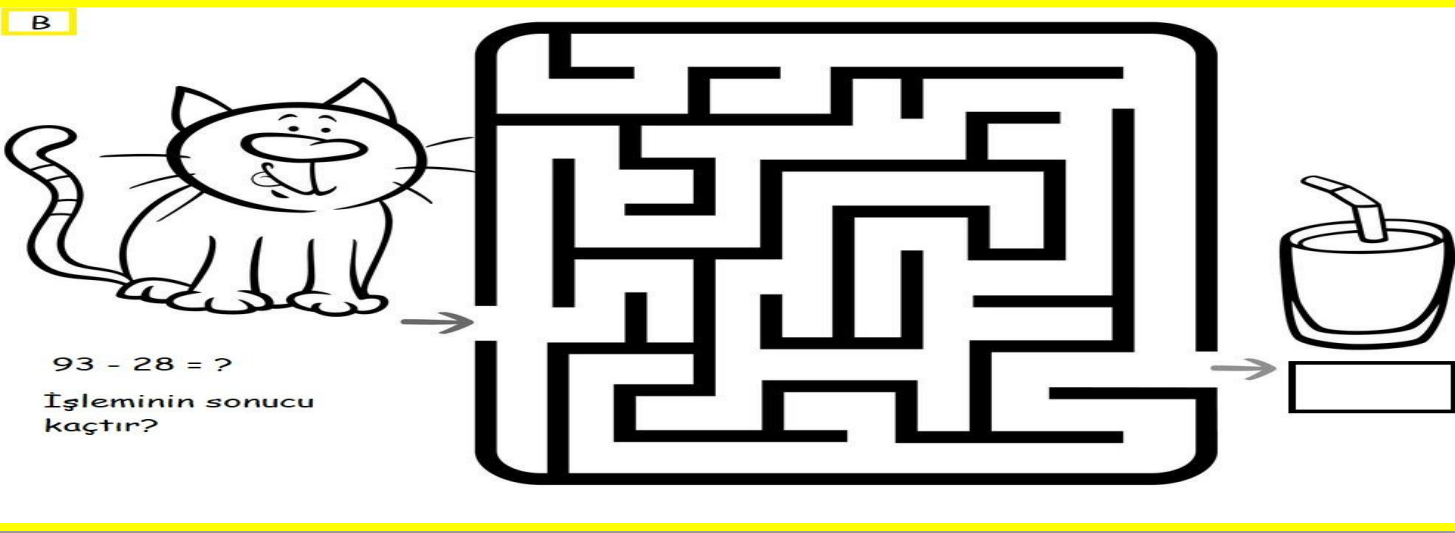
38 sayısının birler basamağının 5 katı kaçtır?



A cartoon pig is holding a pencil and pointing towards a maze. The maze starts at the pig and ends at a box with an arrow pointing up.

**B**

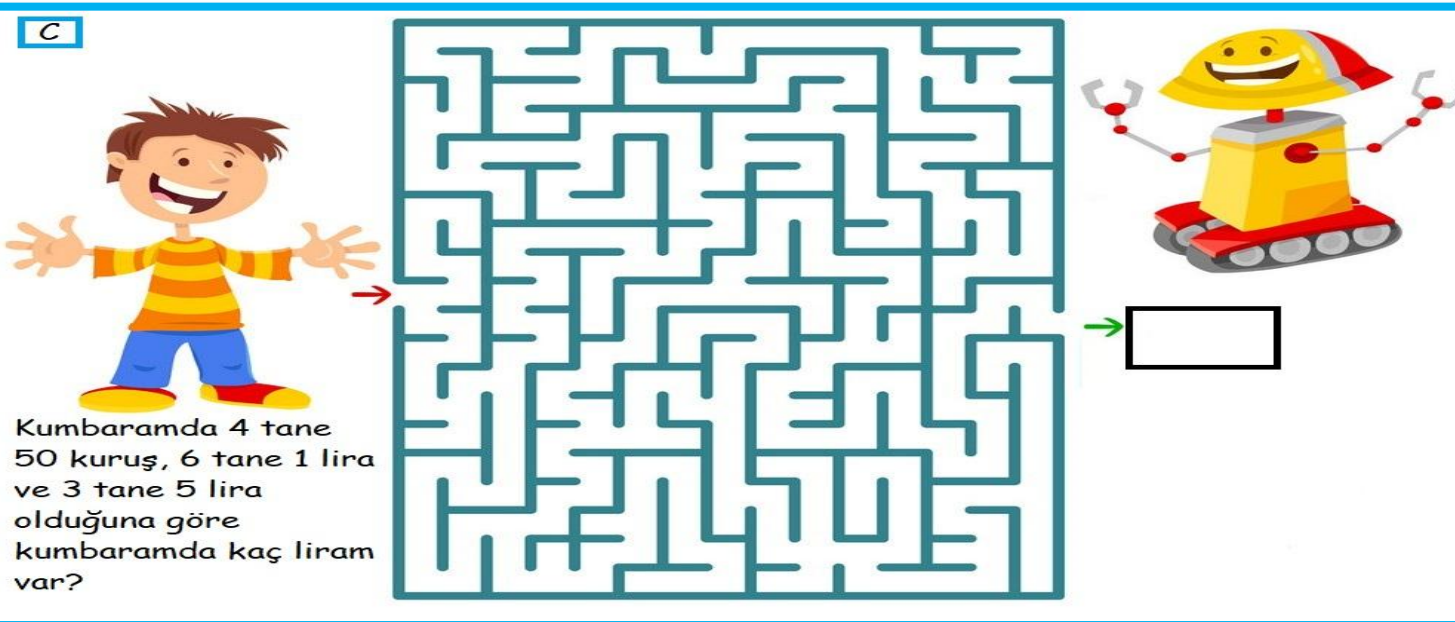
$93 - 28 = ?$   
İşleminin sonucu kaçtır?



A cartoon cat is sitting next to a maze. The maze starts at the cat and ends at a box with an arrow pointing to a glass of juice.

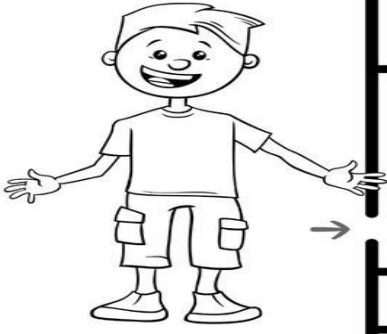
**C**

Kumbaramda 4 tane 50 kuruş, 6 tane 1 lira ve 3 tane 5 lira olduğuna göre kumbaramda kaç liram var?



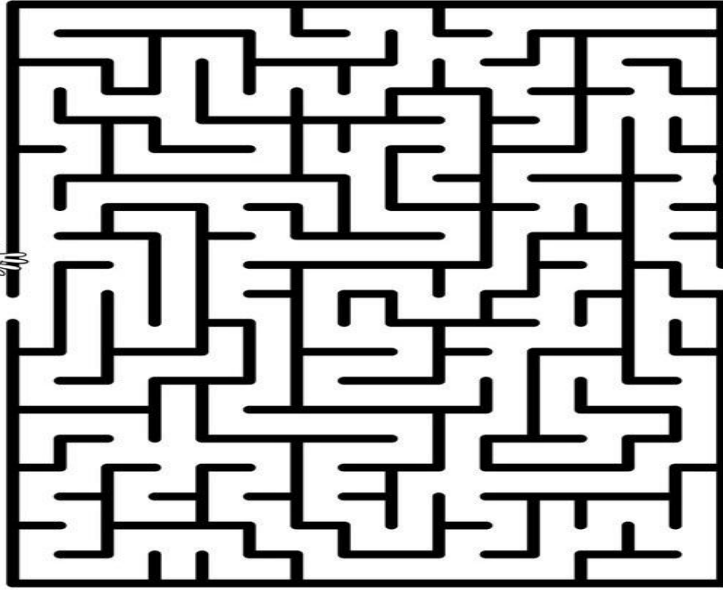
A cartoon boy is standing next to a maze. The maze starts at the boy and ends at a box with an arrow pointing to a robot.

Ç



$$23 + 11 + 15 + 30 = ?$$

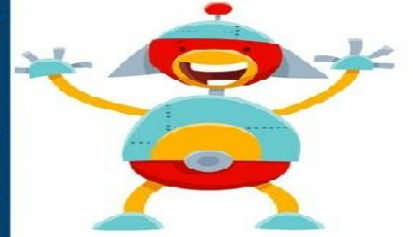
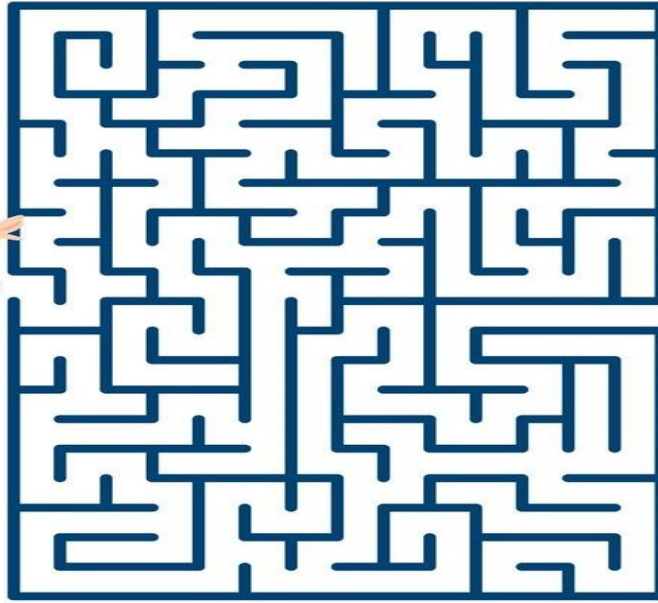
yukarıdaki işlemin sonucu kaçtır?



E



Gösterilen zamanın yarım saat sonrası kaçtır?



F



Sonucu en büyük olan işlem hangi renktedir?

|         |         |         |
|---------|---------|---------|
| 10 x 3  | 96 - 72 | 13 + 23 |
| 34 + 9  | 26 + 31 | 7 x 3   |
| 58 - 38 | 73 - 22 | 9 x 5   |

