



1) Resme göre doğru şıkkı işaretleyelim.

- A) He is fat
- B) He has blue shirt
- C) He is thin
- D) He has curly hair.



2) Resme göre yanlış şıkkı bulalım.

- A) She has blue eyes.
- B) She has blonde hair.
- C) She has short hair.
- D) She is young.

3) What does he look like ? Sorusunun cevabı hangisi olamaz.

- A) He is tall.
- B) He is fat.
- C) He has dark hair.
- D) He is funny.

4) She has curly brown hair. Cümlesi ile eşleşen resim hangi şıktadır.



5) He has ..... hair. Cümlesini hangisiyle tamamlayamayız.

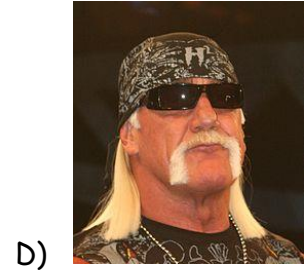
- A) short
- B) long
- C) wavy
- d) fat

6) She has ..... eyes. Cümlesi hangisi ile tamamlanamaz.

- A) hazel
- B) green
- C) pink
- D) brown

7) Yönetmen Mustafa bir dizi çekmek istiyor Elimizde bir oyuncu listesi ve bir özellikler listesi var , haydi oyuncuyu bulalım.

\*He has moustache. \* He has glasses . \* He has blonde hair. \* He has sunglasses.



8)

Hangi cümle Henry'i tanımlar ?

- A) He is old.
- B) He has curly hair.
- C) He has blonde hair.
- D) He has green eyes.



9)

Hangisi Phebe'nin özelliklerinden değildir ?

- A) She has wavy hair.
- B) She has short hair.
- C) She is young.
- D) She has long hair.

10) Hangisinin zıttı yanlış verilmiştir.

- A) fat X thin    B) short X tall    C) rude X polite    D) happy X hardworking

ONUR TÖRE